

# PRODUCT INFORMATION

## Support Communication



PROVIDING THE INFORMATION YOU NEED - WHEN YOU NEED IT!

<b>To:</b>	All FP-30 Digital Scale Users	<b>Date:</b>	04/01/08
<b>From:</b>	Kevin Pietras – FP Product Manager	<b>Reference Number:</b>	012-08
<b>RE:</b>	May 2008 USPS® Rate Change Instructions – FP-30		

## The Enclosed Rate Chip is for Updating the USPS® Shipping Rates on your FP-30 Digital Postage Scale



Please follow these simple instructions for updating the USPS® Rates on your FP-30 Scale:

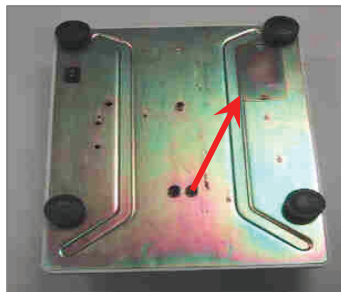
**WARNING: Do Not Attempt To Install the Rate Chip Into Your Postage Meter! This Rate Chip Is For Use With FP External Digital Scales Only!**

1. Switch the **scale** OFF and disconnect the power cord
2. On the bottom of the **scale**, locate a small access panel to the rate chip compartment
3. Remove this panel and gently remove the old rate chip from the scale
4. Insert the new rate chip – You will notice that this chip can only be inserted one way
5. Re-install the small access panel on bottom of scale
6. Re-connect the power cord and turn the scale ON
7. The scale is now ready for operation with the new postage rates
8. Please discard the old rate chip after replacement – please do not return to FP

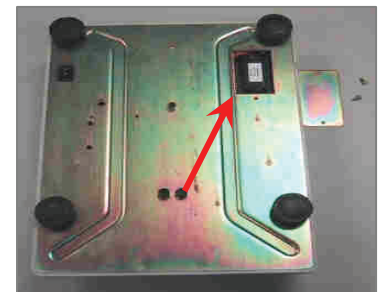
FP-30 Digital Scale



Rate Chip Compartment



Rate Chip Access



Instructional video also available at: <http://www.fpusa.net/movies/ratechipmovies/fp15-30.mpg>

**REMINDER: DO NOT INSTALL THE NEW RATE CHIP UNTIL MAY 12<sup>TH</sup>, 2008!**

If you have any questions, please contact your local FP Authorized Dealer or visit FP's website: [www.fp-usa.com](http://www.fp-usa.com)

